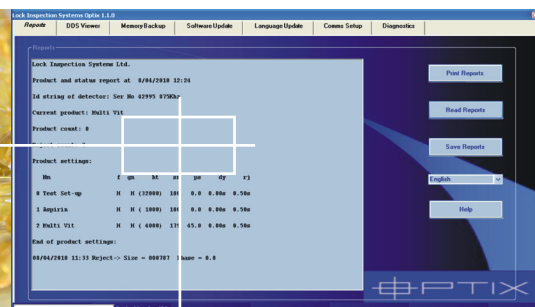
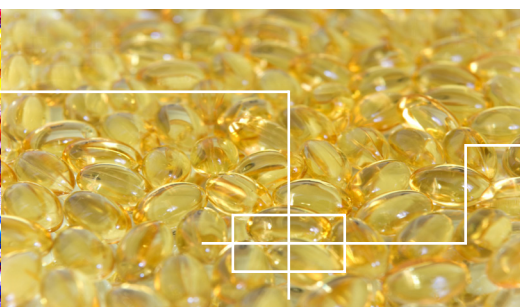


# TECHNICAL DATA

# INSIGHT PH

IN PURSUIT OF PURITY...



Analyse  
Detect  
Report



DDS (Direct Digital Signal)

- 30,000 units per minute throughput
- Best in class sensitivity to magnetic and non magnetic metals
- Stable to extreme vibration and product signal
- Menu with multi language options
- User friendly operation with auto-learn and automatic product tracking features
- Suitable for use with all leading tablet presses and encapsulation machines
- Failsafe Lift-flap, Diverter, Wash-In-Place and Dust Tight reject units available
- Standard external USB
- Available with wired or wireless ethernet and SCADA capability
- Full validation document and certification including IQ, OQ, PQ
- Stainless steel construction sealed to Nema 4X/IP66

The INSIGHT PH range of pharmaceutical metal detectors represents a significant advance in metal detection technology.

Metal detection and signal processing take place in the compact INTEGRATED DIGITAL SEARCH HEAD. Sophisticated OPTIX detector management software uses Lock's unique DDS (Direct Digital Signal) vector diagram to generate the detailed product profile needed to achieve perfect product set-ups. This guarantees detection and rejection of metal fragments at throughputs of up to 30,000 units per minute while achieving stable operation and market leading sensitivities to all metals.

Lock's signature gas strut stand is incorporated in a new stainless steel frame, which offers exceptional manoeuvrability from within the most compact footprint in class, making it convenient for use with all leading tablet presses and encapsulation machines.

# LOCK

EARNING CUSTOMER CONFIDENCE

INSPECTION SYSTEMS



## Automatic Setup

Conductive products such as iron tablets require careful set-up if optimum sensitivity is to be achieved in conjunction with high productivity. The INSIGHT PH will automatically set-up and store 200 different presets.

## Integrated Digital Search Head

- Metal detection, control and signal-processing all take place within the ultra compact detector head, constructed from mirror polished stainless steel and sealed to IP66/NEMA 4X
- Throughput of up to 30,000 tablets or capsules per minute
- Automatic balance control for adjustment-free operation
- User-replaceable electronic module for minimum downtime

## Reject Systems

- Mirror-polished stainless steel grade 316 reject that can be dismantled by hand without the use of tools
- Lift-flap, diverter, Wash-in-Place and Dust Tight rejects all fitted with a solenoid that features reject confirmation and integral cushioned end stop to prevent metal to metal contact with surrounding assembly
- Wash-In-Place and Dust Tight rejects feature watertight and dust-tight product chute
- Reject systems offer easily accessible contact points for complete cleaning to avoid cross contamination between products
- Assemblies can be supplied with single or twin universal diameter outlet pipe for systems integration
- Fail safe operating mode ensures that contaminated product is not accepted in the event of electrical or mechanical failure
- Product flow can be observed through the semi dust tight PETG cover (standard lift-flap reject)

## Mounting

The new stainless steel frame is fully GMP compliant, offering exceptional maneuverability from the most compact footprint in its class. Lock's signature gas strut stand provides height and angle adjustment with angle markings on the support cradle making it convenient for use with all leading tablet presses and encapsulation machines.

## OPTIX Detector Management Software

- OPTIX is a powerful diagnostic and problem solving tool for Engineers and Operators - OPTIX data can be emailed or faxed to facilitate immediate technical support from Lock where necessary
- User friendly membrane or optional touchscreen HMI both feature multi language options and DDS (Direct Digital Signal) vector diagram display - a view into the metal detector
- Multiple set-up memory with the capacity for 200 presets
- Permanent memory stores up to 8000 data events, which are retained when power is interrupted or disconnected
- Automatic TEST SAMPLE prompt

## Calibration Sensitivities:

Head Size	Ferrous	Brass	Stst316
95 x 22mm	0.25mm	0.3mm	0.4mm
95 x 38mm	0.3mm	0.35mm	0.5mm

## Security codes

Four password protected security levels are provided:

- L1: Operator level to change product types.
- L2: Supervisor level to change set-up mode.
- L3: Engineering level to access factory set-up parameters.
- L4: Administration level to enable multi-user ID/Password system

## Communications

Every INSIGHT PH metal detector is available with wired or wireless ethernet connectivity and SCADA capability. The external USB port allows all events and product presets to be downloaded onto a standard memory stick or PC to enable secure storage and distribution of quality records in PDF or other formats.

## Validation

The INSIGHT PH design and applicable components are compliant with current GMP requirements. Full validation documentation can be supplied with each system incorporating IQ, OQ, PQ, calibration and certification.

## Outputs

- Voltage-free relay contacts. Rating 240V, 3A resistive

## Power Supply

- Universal power supply 88-264V AC 47-63 Hz

## Operating Temperature/humidity

- Temperature: -10° to 60°C/14° to 140°F
- Humidity: 0 - 95% Relative humidity (non-condensing)

### Lock Inspection Systems Ltd

Lock House, Neville Street, Oldham, OL9 6LF, UK  
Tel: +44 (0) 161 624 0333 Fax: +44 (0) 161 624 5181  
Email: sales@lockinspection.co.uk

### Lock Inspection Systèmes S.A.R.L.

Parc Silic, Bâtiment H, 12 avenue de Québec, Silic 620, Villebon, 91945 Courtaboeuf Cx, France  
Tel: +33 (0) 169591620 Fax: +33 (0) 1 69 59 16 21  
Email: sales@lockinspection.fr

### Lock Inspection Systems Inc

207 Authority Drive, Fitchburg, MA 01420-6094, USA  
Tel: +1 (0) 978 343 3716 / 800 227 5539  
Fax: +1 (0) 978 343 6278  
Email: sales@lockinspection.com

### Lock Inspection Systems BV

Daalderweg 17, 4879 AX Etten-Leur, Nederland  
Tel: +31 (0) 76 50 30 212 Fax: +31 (0) 76 50 89 800  
Email: sales@lockbv.nl

### Lock Inspection Systems (China Office)

Room 101, Block E  
No.168 Luoyang Road, Minhang District  
Shanghai, Zip-code: 201104, P R China  
Tel: +86 (0) 2154 307 218 Fax: +86 (0) 216 410 2395  
Email: sales@lockuk.cn

[www.lockinspection.com](http://www.lockinspection.com)



# LOCK